

### TECHNICAL DESCRIPTION

CNG twin or single hose assemblies (WP 5,000 psi) for any refuelling situation at bus/truck and passenger car gas stations or fast flow filling systems. Available sizes: 1/4", 3/8" and 1/2". All twin-hose combinations available. (For 3/4" and 1" CNG transfer hoses please contact us). Conductive inner liner to dissipate static electricity. Robust and abrasion resistant cover, lightweight and flexible fiber braid (non-metallic) construction. Kink, crush, twist and pull resistant. For twin-hose configuration: durable bonding which can be split with common tools without damaging the outer cover.



### OPERATING CONDITIONS/APPROVAL

TYPE	WEIGHT lb/ft (kg/m)	HOSE SIZE		Working Pressure (WP) PSI (bar)	Test Pressure PSI (bar)	Min. Burst Pressure PSI (bar)	Operating Temperature -40 °F to +185 °F (-40 °C to +85 °C)	Min. Bending Radius In. (mm)
		ID in. (mm)	OD in. (mm)					
CNG 6 (1/4")	0.278 (0.126)	1/4" (6.5)	0.539 (13.7)	5,000 (350)	10,000 (700)	20,000 (1,400)		1.97 (50)
CNG 10 (3/8")	0.483 (0.219)	3/8" (9.7)	0.744 (18.9)					2.76 (70)
CNG 12 (1/2")	0.628 (0.285)	1/2" (13.0)	0.886 (22.5)					3.54 (90)

**Certified to CSA/ANSI NGV 4.2:22** – Hoses and hose assemblies for compressed natural gas (CNG) dispensing systems for natural gas vehicles (NGV). Certificate: 80162502.

**Marking:** Continuous, abrasion resistant as specified in CSA/ANSI NGV 4.2:22

... ELAFLEX · CNG 10 · 3/8 INCH · CONDUCTIVE · WP 350bar / 5000PSI · WT -40C – +85C / -40F – +185F ·  
CSA/ANSI NGV 4.2:22 · Made in Italy · <QQ/YY> · <Batch No>

**Testing:** Each hose assembly is hydraulic pressure tested with two times the WP (700 bar/10,000 psi) and labelled with the prescribed metal ring tag. Each hose assembly is sent with a warning label.

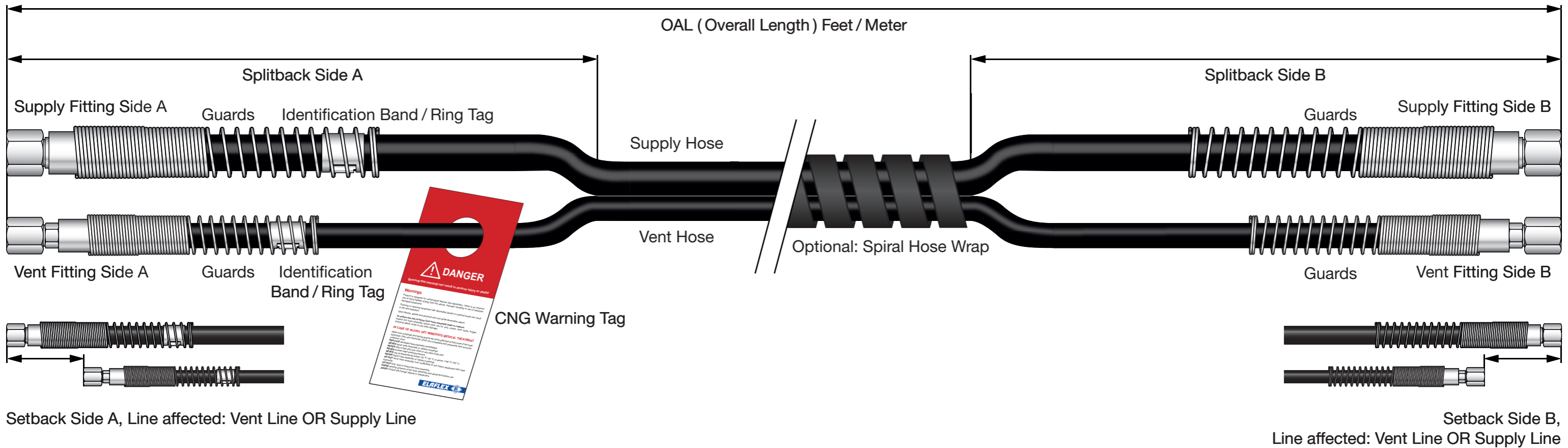
**Lining:** PA, black, electrically conductive, diffusion resistant

**Reinforcements:** Aramid and synthetic fiber braids

**Cover:** PU – flame and abrasion resistant, ozone, UV and aging resistant, pricked.  
Colours: DN 6 black, DN 10 & DN 12 orange

OVERVIEW

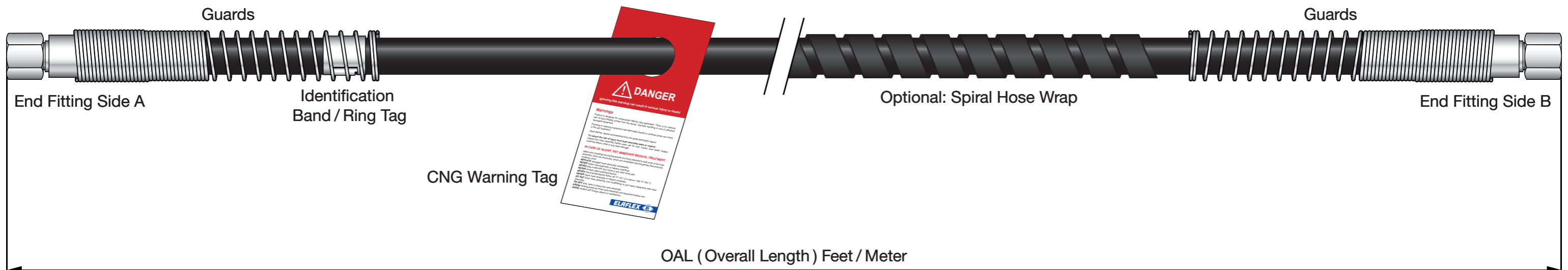
CNG Twin Hose Assembly



Further Information:

1. The OAL (Overall Length) of the assembly is measured using the longest line of each side
2. Guards for CNG 1/4", 3/8" and 1/2" are from galvanised steel, guards for CNG 3/4" and 1" are from vinyl.
3. A setback is defined as the offset distance between the fitting of the longest line to the other hoses' end fitting > the line affected is the shorter side of the setback.
4. Spiral hose wrap is made from thermoplastic material. For single hose assemblies it covers the full length from fitting to fitting. For twin hose assemblies it covers the length from splitback side A to splitback side B.

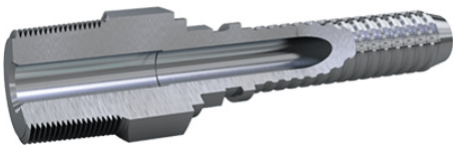
CNG Single Hose Assembly



## PART NUMBERS

HOSE	TYPE	MALE/FEMALE	THREAD/SIZE		
CNG 6 (1/4")	JIC	female	7/16"-20 (Size #4)	Standard lengths available up to 100 ft (measured from sealing surface to sealing surface). Longer lengths available on request.  CNG 6, CNG 10 and CNG 12 hose assemblies can be manufactured as single or twin-hose configuration. Standard anti-kinking equipment: Spring guards. Optionally available with spiral hose wrap.  Fittings made of galvanized carbon steel. Stainless steel fittings available on request.	
	JIC	female	9/16"-18 (Size #6)		
	NPT	male	1/4"		
	NPT	male	3/8"		
	ORFS	male	9/16"-18 (Size #4)		
	ORFS	female	11/16"-16 (Size #6)		
	ORFS	male	11/16"-16 (Size #6)		
	SAE/BOSS/ORB	male	7/16"-20 (Size #4)		
	SAE/BOSS/ORB	male	9/16"-18 (Size #6)		
CNG 10 (3/8")	JIC	female	9/16"-18 (Size #6)		
	JIC	female	3/4"-16 (Size #8)		
	NPT	male	3/8"		
	ORFS	female	11/16"-16 (Size #6)		
	ORFS	male	11/16"-16 (Size #6)		
	SAE/BOSS/ORB	male	9/16"-18 (Size #6)		
CNG 12 (1/2")	JIC	female	3/4"-16 (Size #8)		
	JIC	female	7/8"-14 (Size #10)		
	NPT	male	1/2"		
	ORFS	female	13/16"-16 (Size #8)		
	ORFS	female	13/16"-16 (Size #8)		
	SAE/BOSS/ORB	male	3/4"-16 (Size #8)		

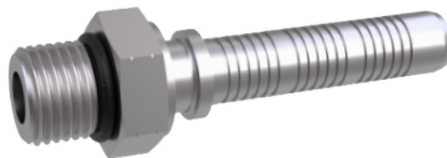
NPT male



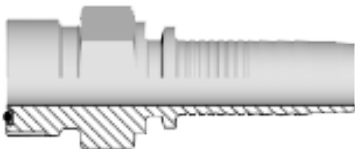
JIC 37° female



ORB male



ORFS male



ORFS female

