

DESIGN 2.0

Dry Disconnect Coupling



MannTek

ELAFLEX 

DESIGN 2.0

- A NEW STATE OF THE ART DDC

NEW DESIGN LANGUAGE

- Design based on handling and ergonomics
- Integrated shape of body, handles and bumper
- Bumper with guidance covering the roll axles
- Detail finish by new manufacturing methods
- Cylindrical handle interface reduces volume

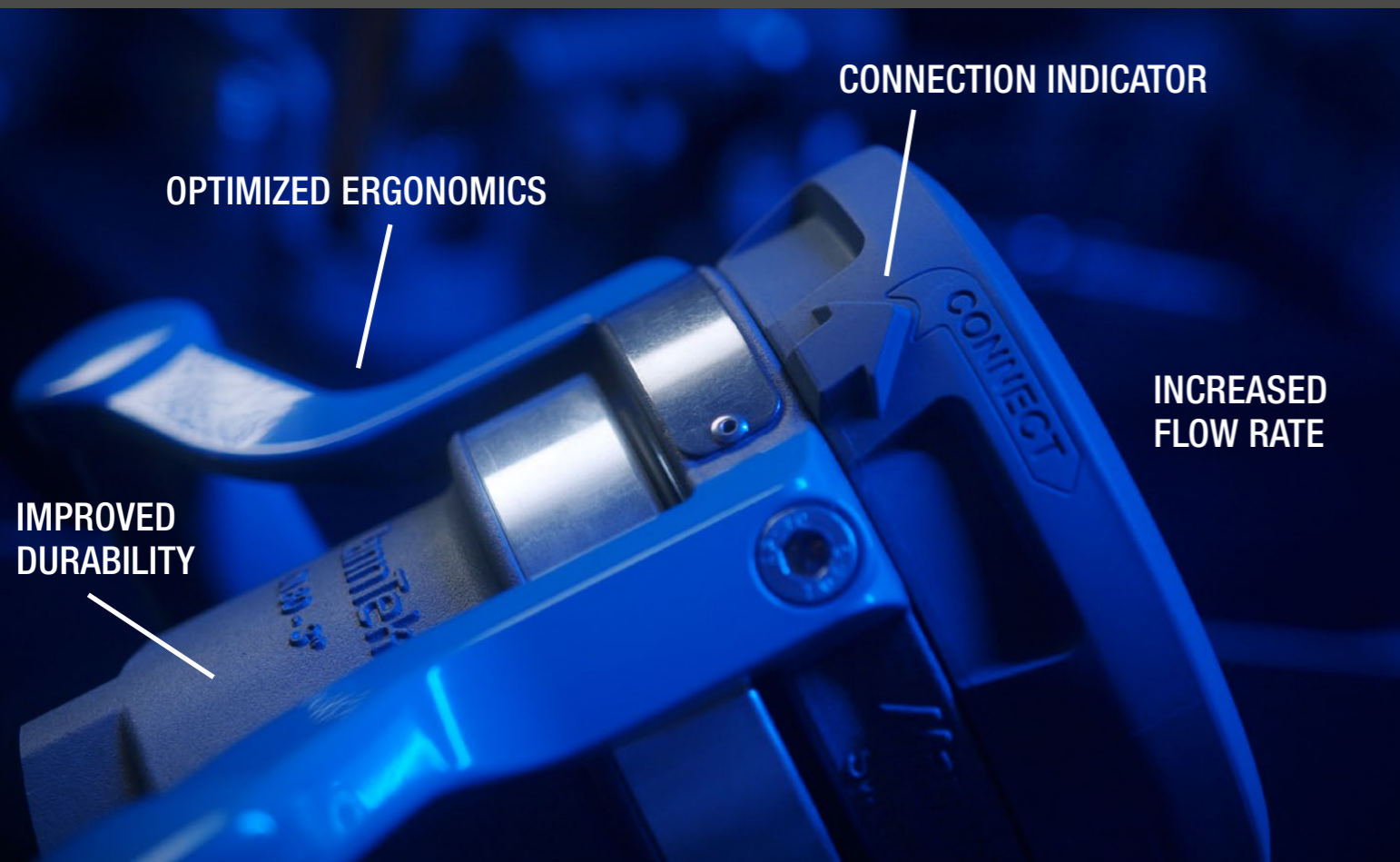
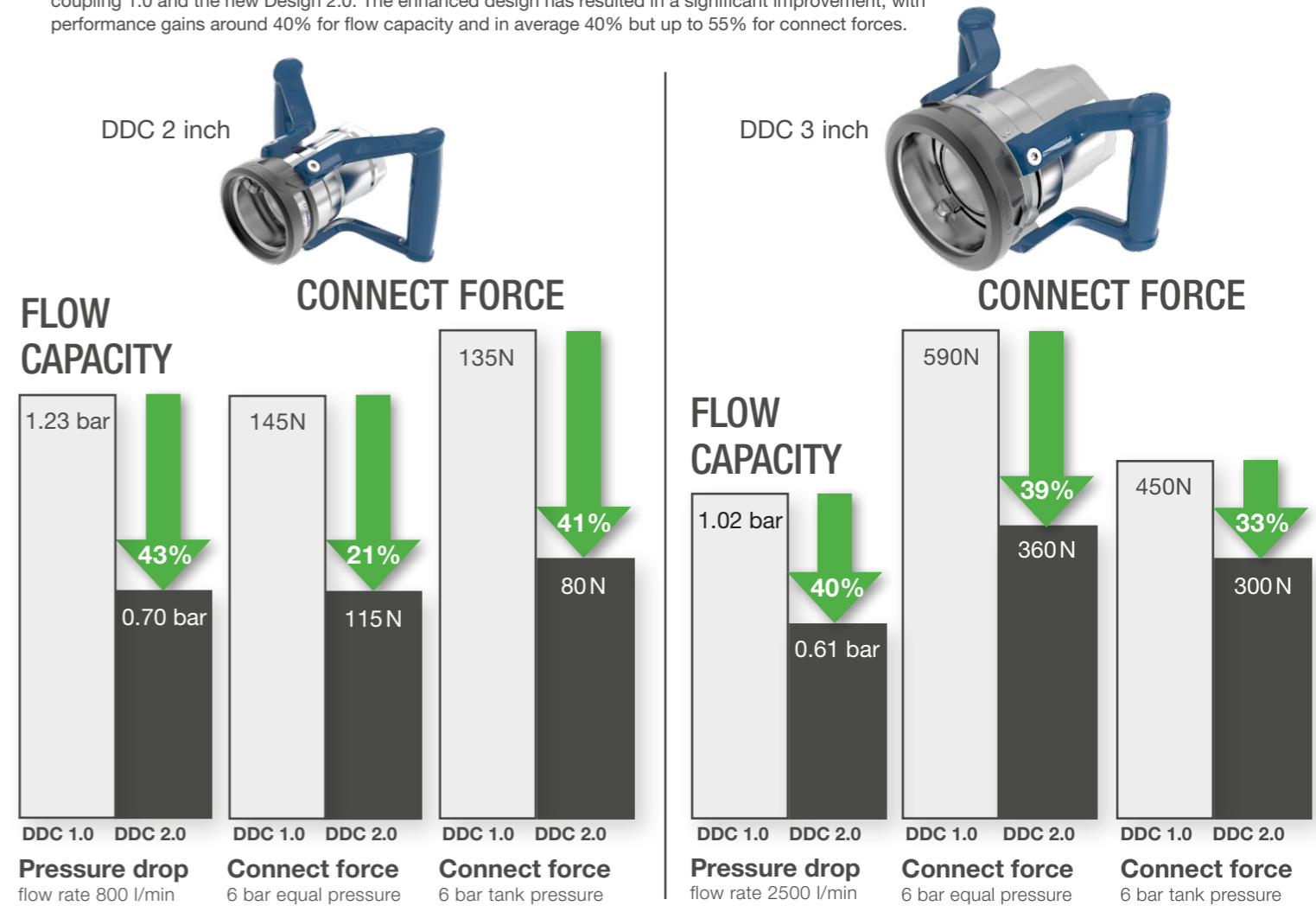
NEW MARKET LEADING PERFORMANCE

- Around 43% improved flow capacity
- Up to 55% reduction of coupling force
- Leading user ergonomics through force reduction and optimized handle design

MAJOR CUSTOMER BENEFITS

- More convenient handling with reduced stress on muscles and joints
- Improved flow rate means shorter loading time and reduced energy consumption
- Increase of durability, through force reduction and new materials
- MannTek's easy-to-service design kept unchanged!

This diagram illustrates the performance improvements, measured in percentages, between our established coupling 1.0 and the new Design 2.0. The enhanced design has resulted in a significant improvement, with performance gains around 40% for flow capacity and in average 40% but up to 55% for connect forces.



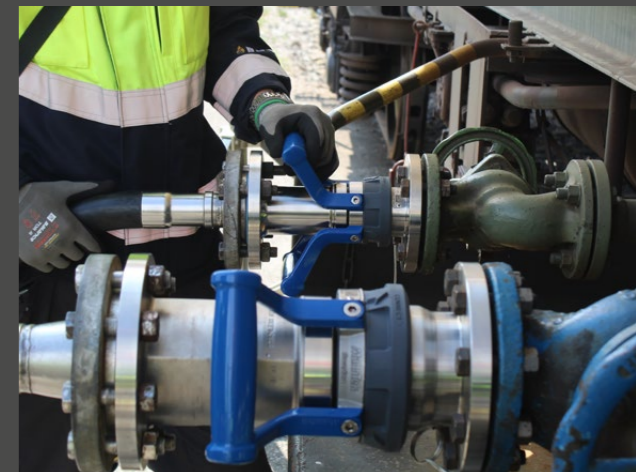
INTEGRATED PRODUCT DESIGN FOR SUPREME PERFORMANCE AND HANDLING

With experience of more than one million couplings delivered over 25 years, MannTek decided to set a new standard for DDC couplings. The Original Design 1.0 is known for its highly competitive performance and is well-regarded worldwide. The new Design 2.0 is a careful evolutionary redesign, based on results from field studies and user tests.

With Design 2.0 both flow capacity and user ergonomics have been improved to a new state of the art level. The flow capacity is increased around 40% through design optimisation, and has been verified in a number of incremental flow rate simulations.

The ergonomics are improved on a number of points:

- Clear visual indicators for easier alignment
- Connect forces reduced up to 55%
- New handle design offers a more convenient, balanced and effective handling, beside a more compact rotation volume
- Design 2.0 offers more optional feature combinations like sensors, locking device, stop before disconnect etc.



THE ELAFLEX GROUP



Contact data of our approximately 150 distribution partners worldwide:
elaflex.de/en/contact/distribution-partners

ELAFLEX WORLDWIDE

Air Traffic Trade AB Sweden	Måttbandsvägen 12 18766 Täby Tel. +46 8-768 39 90 info@airtt.se airtt.se	ELAFLEX FRANCE SARL France	Aktipark 50 Rue des Chardonnerets, Lot N° 3 93290 Tremblay en France Tel. +33 1 41 84 06 22 info@elaflex.fr elaflex.fr	ELAFLEX Yakıt İletim Ürünleri Ltd. Şti. Turkey	42 Maslak Plaza Ahi Evran Street No:6 34485 Maslak - Sarıyer İstanbul, Turkey Tel. +90 212 974 1020 batuhan.kiroglu@elaflex.com elaflex.com.tr
Aljac Fuelling Components Ltd. Germany	c/o ELAFLEX HIBY GmbH & Co. KG Schnackenburgallee 121 22525 Hamburg Tel. +49 40 6908 4116 info@aljac.de aljac.de	ELAFLEX ITALIA SRL Italy	Via Industriale 28 25086 Rezzato (BS) Tel. +39 030 249 61 00 info@elaflex.it elaflex.it	Mann Teknik AB Sweden	Strandvägen 16 54231 Mariestad Tel. +46 501 39 32 00 sales@manntek.se manntek.se
Aljac Fuelling Components Ltd. Great Britain	Unit 1a, Watchmore Point Camberly, Surrey GU15 3AD Tel. +44 1932 269869 sales@aljac.com aljac.com	ELAFLEX Latin America S.A. Argentina	Av. Dardo Rocha 2524 Piso 1° Martinez (1640) Buenos Aires, Argentina Tel. +54 11 4836-3510 ventas.latinamericah@elaflex.com.ar elaflex.com.ar	Mann Teknik China China	Building C, No 505, 23rd Street, Qian Tang District, Hangzhou Tel. +86 571-87695112 info@manntek.cn manntek.cn
DANTEC LTD Great Britain	Tarran Way, Moreton, Wirral CH46 4TL Tel. +44 151 678 2222 sales@dantec.com dantec.com	ELAFLEX LTD Great Britain	Riverside House Plumpton Road Hoddesdon, Herts EN11 0PA Tel. +44 1992 45 29 50 sales@elaflex.co.uk elaflex.co.uk	MannTek Couplings India Pvt. Ltd. India	Office No. LF7A/7B Lotus Aura, Sama -Savli Road, Vadodara - 390008, Gujarat Tel. +91 9558 825 855
ditec Gruppe Germany	An der Staustufe 6 97318 Kitzingen Tel. +49 9321 2307-0 info@ditec-adam.de ditec-adam.de	ELAFLEX NV Belgium	Merksemsesteenweg 192 2100 Deurne (Antwerp) Tel. +32 3 32 80 420 info@elaflex.be elaflex.be	Oasis Engineering Limited New Zealand	129 Birch Avenue Tauranga, 3110 Tel. +64 7 928 3808 info@oasisngv.com oasisngv.com
ELAFLEX AB Sweden	Måttbandsvägen 12 18766 Täby Tel. +46 8 980 130 info@elaflex.se elaflex.se	ELAFLEX PACIFIC PTY LTD Australia	Unit 29/58 Box Road Taren Point NSW 2229 Tel. +61 2 9525 0945 info@elaflex.com.au elaflex.com.au	SGB GmbH Germany	Hofstraße 10 57076 Siegen Tel. +49 271 48964-0 sgb@sgb.de sgb.de
ELAFLEX HIBY Asia-Pacific Pte. Ltd. Singapore	Mr. Patrick Velten Office Singapore Tel. +65 9 877 5664 patrick.velten@elaflex.com	ELAFLEX Representation Office China	Mr. Jing Fan Room 1120, 1101 South Pudong Road, 200120 Shanghai, P.R. China Tel. +86 21 505 414 54 fan.jing@elaflex.net.cn elaflex.com		
ELAFLEX BRAZIL Eireli Brazil	Avenida Brigadeiro Luis Antonio, N° 300 8º andar sala 82 Bela vista, São Paulo-SP Brazil - CEP 01318-903 Tel. +55 11 4153-2171 vendas.brasil@elaflex.com.ar elaflex.com.ar	ELAFLEX US Inc. USA	7050 Village Drive, Suite C Buena Park, CA 90621 Tel. +1 888 472 7444 info@elaflexus.com elaflexus.com		



ELAFLEXHIBY GmbH & Co. KG
 Schnackenburgallee 121
 22525 Hamburg | Germany
 Tel. +49 40 540005-0
 info@elaflex.de
 elaflex.com